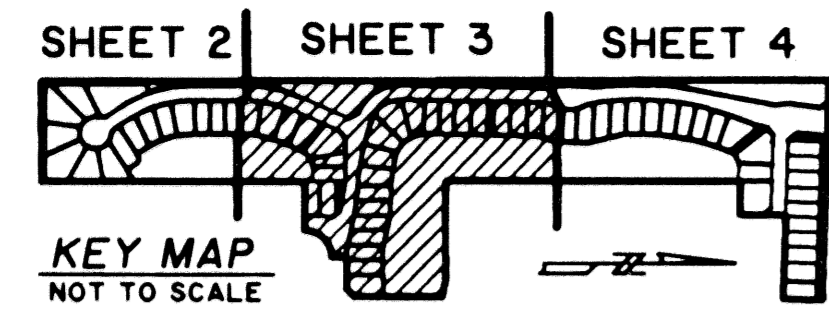


THE CLUB AT INDIAN LAKES

BEING A REPLAT OF A PORTION OF ROSSMOOR LAKES AS RECORDED IN PLAT BOOK 73, PAGES 136 THROUGH 141 AND A PORTION OF ROSSMOOR LAKES REPLAT AS RECORDED IN PLAT BOOK 80, PAGES III THROUGH III, PUBLIC RECORDS OF PALM BEACH COUNTY, FLORIDA AND LYING IN AND BEING A PORTION OF SECTION 27, TOWNSHIP 45 SOUTH, RANGE 42 EAST, PALM BEACH COUNTY, FLORIDA.

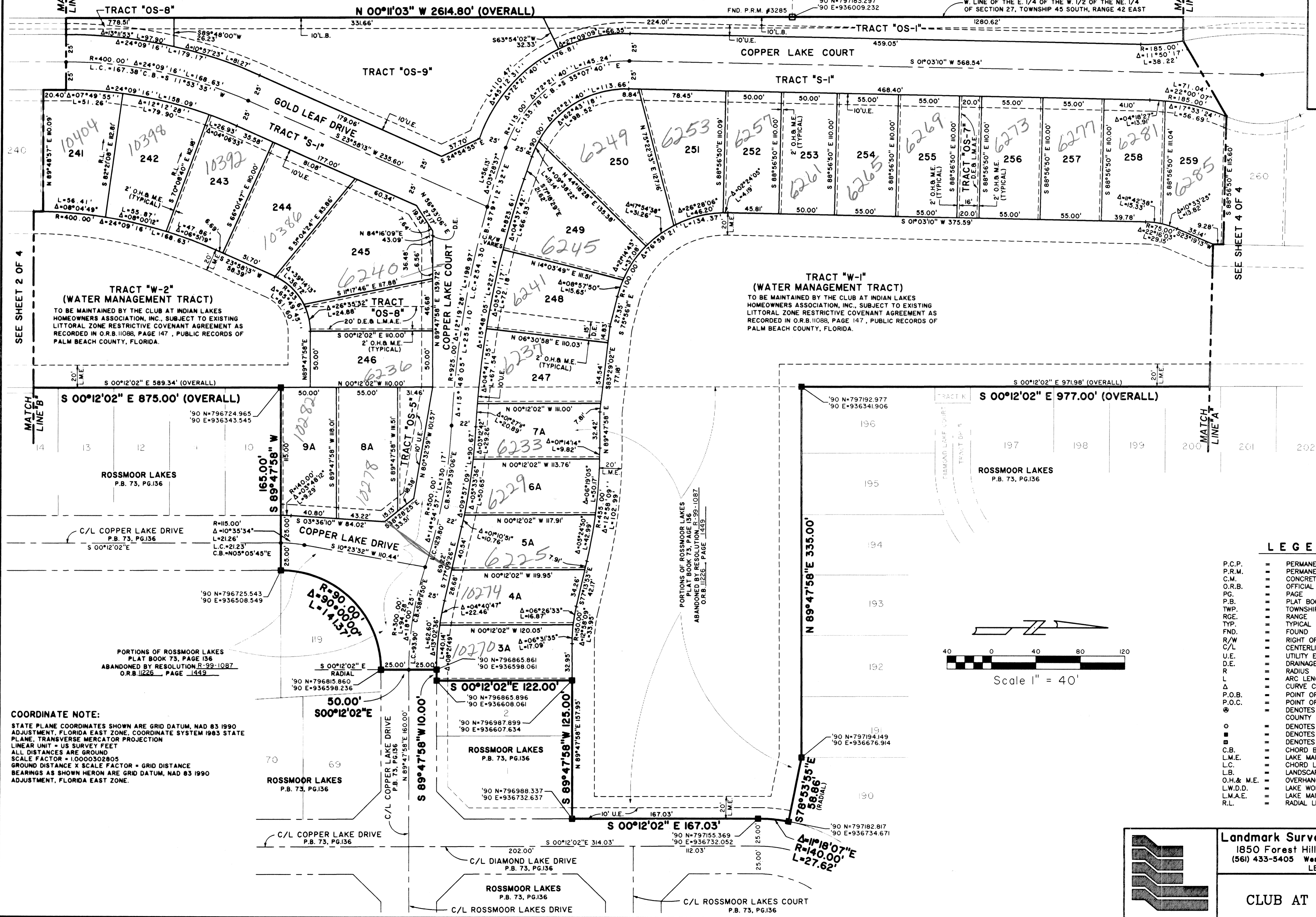


NOT PLATTED

GROVE ISLE (PLAT BOOK 79, PAGES 27-29)

SHEET 3 OF 4

W. LINE OF THE E. 1/4 OF THE W. 1/2 OF THE NE. 1/4 OF SECTION 27, TOWNSHIP 45 SOUTH, RANGE 42 EAST



SEE SHEET 2 OF 4

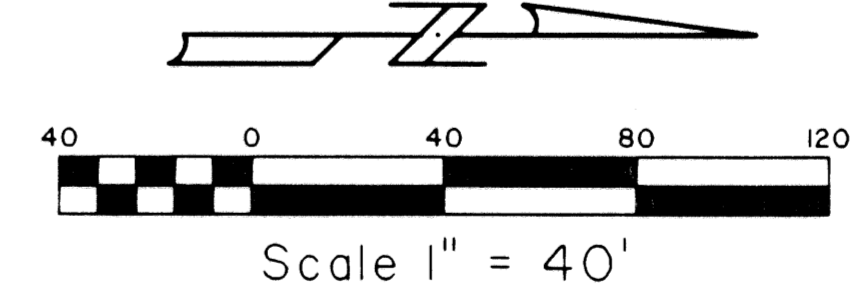
SEE SHEET 4 OF 4

TRACT "W-2" (WATER MANAGEMENT TRACT)
TO BE MAINTAINED BY THE CLUB AT INDIAN LAKES HOMEOWNERS ASSOCIATION, INC. SUBJECT TO EXISTING LITTORAL ZONE RESTRICTIVE COVENANT AGREEMENT AS RECORDED IN O.R.B. 11088, PAGE 147, PUBLIC RECORDS OF PALM BEACH COUNTY, FLORIDA.

TRACT "W-1" (WATER MANAGEMENT TRACT)
TO BE MAINTAINED BY THE CLUB AT INDIAN LAKES HOMEOWNERS ASSOCIATION, INC. SUBJECT TO EXISTING LITTORAL ZONE RESTRICTIVE COVENANT AGREEMENT AS RECORDED IN O.R.B. 11088, PAGE 147, PUBLIC RECORDS OF PALM BEACH COUNTY, FLORIDA.

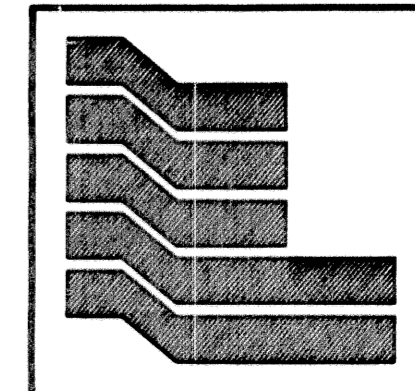
LEGEND

- P.C.P. = PERMANENT CONTROL POINT
- P.R.M. = PERMANENT REFERENCE MONUMENT
- C.M. = CONCRETE MONUMENT
- O.R.B. = OFFICIAL RECORD BOOK
- PG. = PAGE
- P.B. = PLAT BOOK
- TWP. = TOWNSHIP
- RGE. = RANGE
- TYP. = TYPICAL
- FND. = FOUND
- R/W = RIGHT OF WAY
- C/L = CENTERLINE
- U.E. = UTILITY EASEMENT
- D.E. = DRAINAGE EASEMENT
- R. = RADIUS
- L. = ARC LENGTH
- Δ = CURVE CENTRAL ANGLE
- P.O.B. = POINT OF BEGINNING
- P.O.C. = POINT OF COMMENCEMENT
- ⊙ = DENOTES FOUND PALM BEACH COUNTY DISK IN CONCRETE
- = DENOTES SET P.C.P. PSM 5019
- = DENOTES SET P.R.M. PSM 5019
- = DENOTES P.R.M. FOUND (AS NOTED)
- C.B. = CHORD BEARING
- L.M.E. = LAKE MAINTENANCE EASEMENT
- L.C. = CHORD LENGTH
- L.B. = LANDSCAPE BUFFER
- O.H. & M.E. = OVERHANG AND MAINTENANCE EASEMENT
- L.W.D.D. = LAKE WORTH DRAINAGE DISTRICT
- L.M.A.E. = LAKE MAINTENANCE ACCESS EASEMENT
- R.L. = RADIAL LINE



COORDINATE NOTE:
STATE PLANE COORDINATES SHOWN ARE GRID DATUM, NAD 83 1990 ADJUSTMENT, FLORIDA EAST ZONE, COORDINATE SYSTEM 1983 STATE PLANE, TRANSVERSE MERCATOR PROJECTION
LINEAR UNIT = US SURVEY FEET
ALL DISTANCES ARE GROUND
SCALE FACTOR = 1.0000302805
GROUND DISTANCE X SCALE FACTOR = GRID DISTANCE
BEARINGS AS SHOWN HEREON ARE GRID DATUM, NAD 83 1990 ADJUSTMENT, FLORIDA EAST ZONE.

Subdivision Club at Indian Lakes
BOOK 85 PAGE 202
FLOOD MAP # 125A
ZONING RTU
SQ. 93-34
T.L.C.
PUD NAME Rossmoor Lakes



Landmark Surveying & Mapping Inc.
1850 Forest Hill Boulevard Suite 100
(561) 433-5405 West Palm Beach, Florida 33406
LB # 4396

THE CLUB AT INDIAN LAKES